



Next steps for nFORM and CQI

Well nFORMed: nFORM and CQI Training Series, Day 6 – June 11, 2026

Data capacity and CQI TTA team, Mathematica

Welcome! In the chat, add any questions or topics you want us to address or cover today.



Today's presenters



Scott Richman

Data Capacity and
CQI TTA Team
Member



Hannah McInerney

Data Capacity and
CQI TTA Team Lead



Housekeeping

Please mute your line

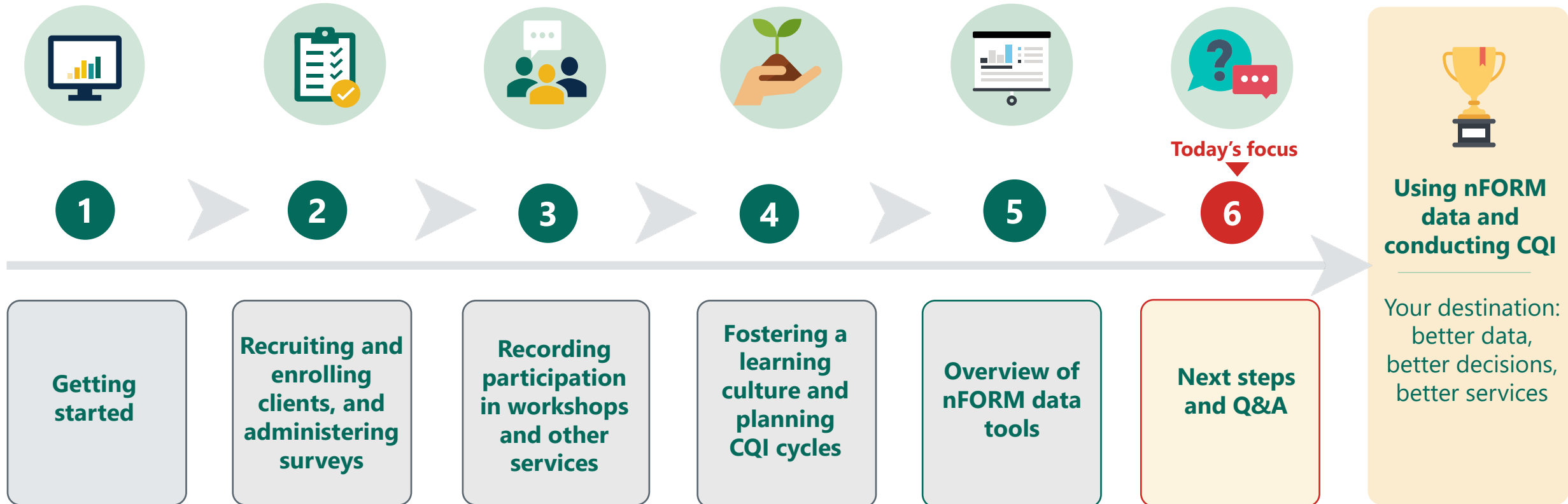
Access closed-captioning by clicking the “CC” icon in the lower left corner, or by pressing CTRL+SHIFT+A

Use the chat to ask questions

Recording and slides from today’s training will be made available on the HMRF Grant Resource site at <https://hmrfggrantresources.info/>



Well nFORMed Training Series Roadmap





Agenda

- **Strengthening data capacity and CQI**
- **Kicking off data collection and CQI**
- **Confirming grant year 2 enrollment and participation targets**
- **Questions and answers**



| Strengthening data capacity and CQI



Check out the HMRF Grant Resource site!



Publicly available



Various resources included



Search by keyword, type, or topic

<https://www.hmrfgrantresources.info/>



nFORM/CQI RESOURCES

INTERACTIVE SNAPSHOTS



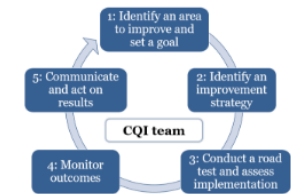
nFORM and CQI Resources



This page includes information and tools to support HMRF grant recipients in using nFORM and conducting continuous quality improvement (CQI). If you have any questions after reviewing these resources, you may request technical assistance by emailing nFORMCQITA@mathematica-mpr.com.

Please contact your grant organization's nFORM site administrator(s) for help with log in issues including resetting passwords and reactivating accounts. Site administrators should leave a voicemail for Mathematica at 844-619-6841 if they are also unable to log into nFORM.

Additional resources will be added on a regular basis. Check back for updates!



Quick Links

Detailed Instructions and Tools

- This template helps grant teams plan the steps, timing and staff involved in each step of data collection and CQI. [Data Capacity and CQI Plan Template](#).
- This manual provides step-by-step instructions for using nFORM (coming soon).
- This tool provides considerations for planning each step in the CQI cycle (coming soon).
- This is a PDF of privacy information to provide to clients (coming soon).

Data Dictionary (coming soon)

- This document provides the record layout for the data fields that are included in the data export from nFORM.

Training Videos

- This introductory video provides an overview of nFORM, CQI, and activities that will take place prior to the launch of data collection. [Introduction to nFORM and CQI](#).
- This training video describes best practices to follow to keep data secure. [Keeping Data Secure](#).



Join us for office hours

Register for biweekly data capacity and CQI office hours

- 2nd and 4th Tuesday of each month from 2-3pm Eastern time
- Links included in weekly HMRF Weekly Digest emails

Sessions include tutorials, peer learning, and opportunities to ask questions in real time

Stay tuned for information on July 14 (data capacity) and July 28 (CQI) sessions

All nFORM users and CQI staff encouraged to attend!



Reach out to the help desk

nFORM
Information, Family Outcomes, Reporting, and Management

Clients Workshops Service Providers Reports Settings **Help**

Hello, [user2009@masked.com!](#) [Log off](#)


How can we help you?

Select the link below to view resources about using nFORM for performance measures data collection, reporting and conducting continuous quality improvement (CQI).

Please contact your grant organization's site administrator(s) for help with log in issues including locked accounts and resetting passwords. Site administrators can leave a voice mail for Mathematica at 844-619-6841 if they are also unable to log into nFORM.

If you need additional help with nFORM or CQI after reviewing the resources, please send an email describing your question to nFORMCQITA@mathematica-mpr.com.

As a reminder, never include clients' personally identifiable information (PII)—such as client names and phone numbers—when contacting the TA team. Also, never take screenshots of PII from nFORM.

 [View nFORM and CQI Resources](#)

[Clients](#) [Workshops](#) [Service Providers](#) [Reports](#) [Settings](#) [Help](#)

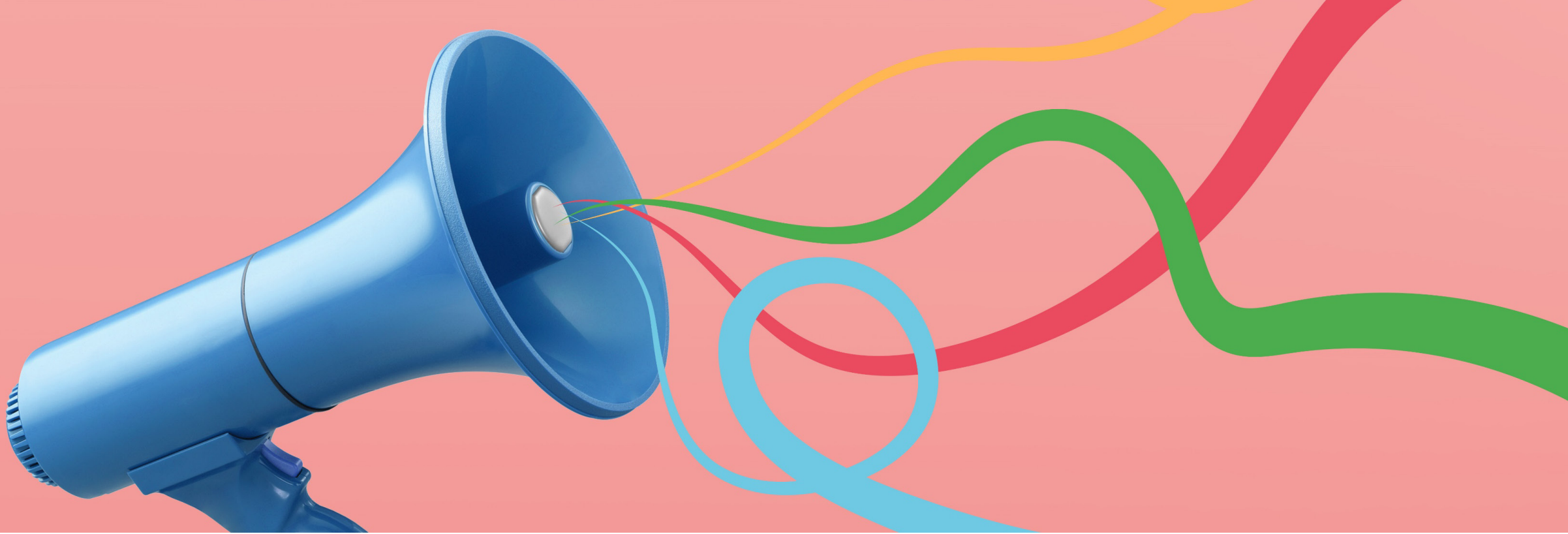
© 2026 - nFORM - Information, Family Outcomes, Reporting and Management [HHS Vulnerability Disclosure Policy](#) HD1



**[nFORMCQITA@
mathematica-mpr.com](mailto:nFORMCQITA@mathematica-mpr.com)**



844-619-6841



Kicking off data collection and CQI



Initial site administrator account setup

ACF will launch nFORM after receiving OMB approval for performance measures

Site admins will receive email from nFORMCQITANoReply@mathematica-mpr.com to activate accounts

- Activation link only valid same day

Email data capacity and CQI TTA team with any questions or issues with account setup

Initial site admins will...

- ✓ Create additional user accounts
- ✓ Add grant locations
- ✓ Enter service providers
- ✓ Set up workshops





Build a strong foundation for CQI

Early steps include:



Begin to foster a CQI culture

- Secure buy-in from organizational leadership
- Ensure program staff know how they contribute to strong CQI
- Set expectations around using data and goals for learning



Form your CQI team

- Establish team expectations, time commitments, meeting frequency
- Communication/decision making processes
- Designate roles



Begin to plan your first CQI cycle

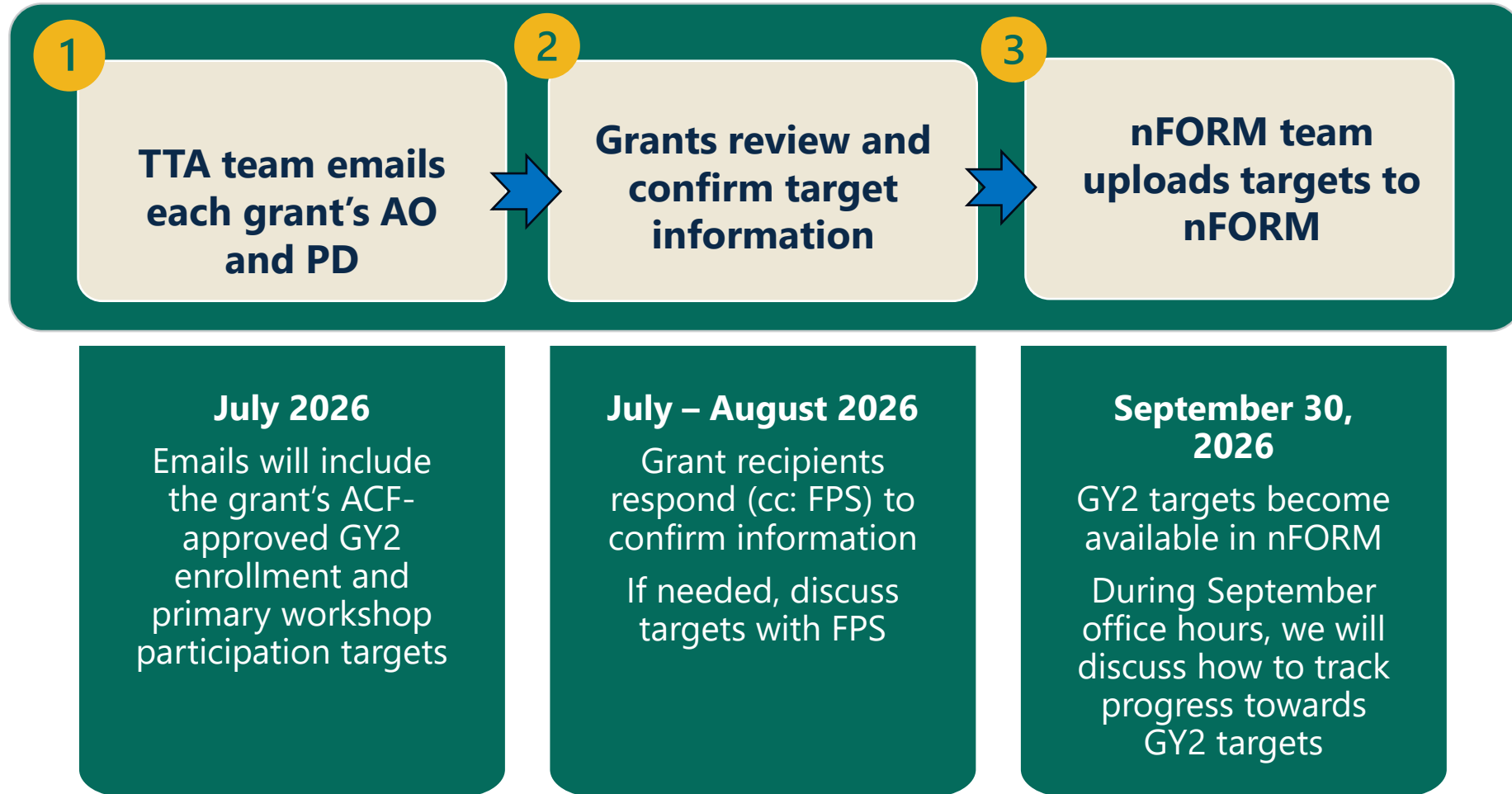
- Review the CQI cycle worksheet and consider what challenge to tackle first
- Discuss how your team will move through the CQI cycle
- Assess your capacity to carry out CQI and identify resources to support your team



Confirming grant year 2 enrollment and participation targets



Grant year 2 (GY2) target confirmation process



Questions and answers

What questions do you have?

What topics can we clarify or review?





Wrap up

Review [nFORM user manual](#) for more information on all features and functions covered during training

All nFORM and CQI resources are posted on HMRF Grant Resource site at <https://hmrfgantresources.info/>

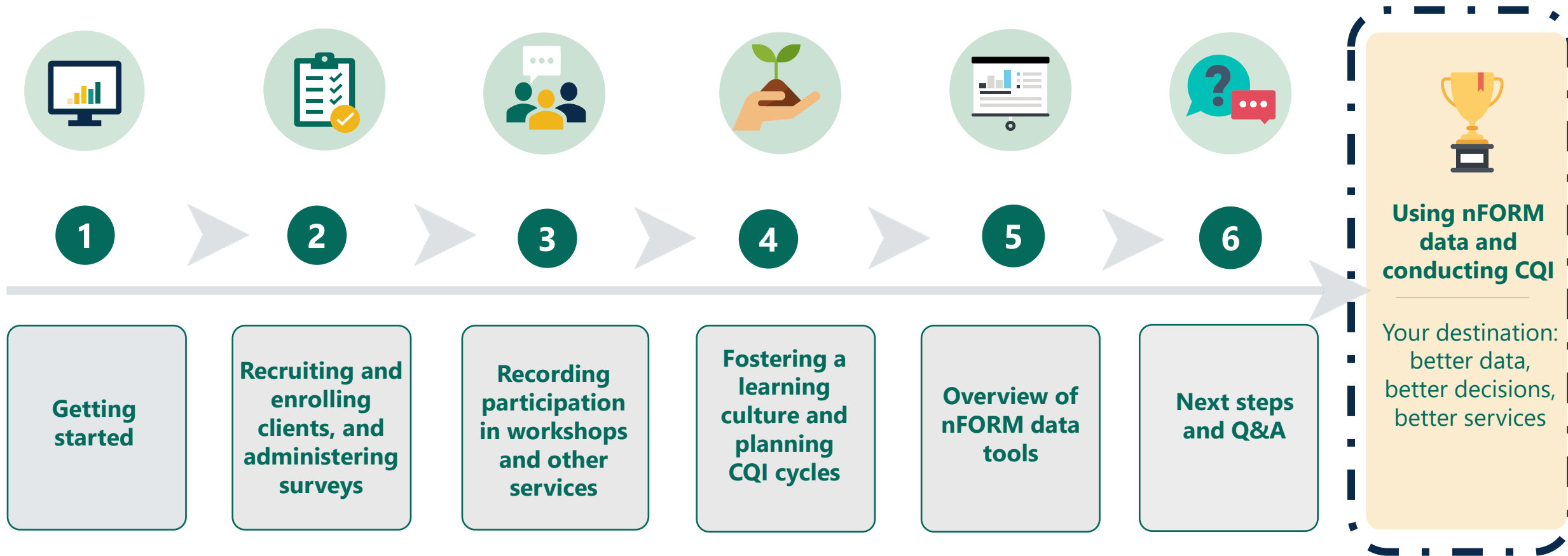
After reviewing resources, contact the data capacity and CQI TTA help desk with any questions at nFORMCQITA@mathematica-mpr.com

Data security reminders

- Never text or email personally identifiable information (PII) like client names – including to the help desk
- Never take screenshots of client PII from nFORM
- Everyone who interacts with client data should watch the [Keeping Data Secure training video](#) and review **Module I of the nFORM user manual**



You're ready to use nFORM and conduct CQI!





| You've got this!